

Machine Mat with Pocket

Border Guide Foot

WHAT YOU WILL NEED

Janome Sewing Machine (we used the CM7P)
Border Guide Foot **FB**
Satin Stitch Foot **F**
AcuFeed Foot **AD** (dual feed ft) or Even Feed Foot
Janome Blue Tip Needle
Janome Plastic Bobbin
Quilting Pins / Quilt clips
Quilting Safety Pins
Erasable Markers Chalk & Felt Tip Marker for plastic
Scissors or Thread Snips
Cutting Mat / Rotary Cutter / Quilt ruler
Ironing Board & Iron

FABRIC & NOTIONS

Quilt Fabric (2.5m) *if you use for binding as well*
Clear Vinyl Plastic for pocket (75cm x 15cm)
Fusible Fleece 1m
Fusible Tear-away Stabilizer (1m x 55cm wide)
Bias Binding 25mm (4 metres) *only required if you are not cutting your own from the Quilt fabric*
1 x Reel of Sewing Thread (match fabric, we used rasant)
1 x Reel Decorative Thread (WonderFil variegated)

CUTTING INSTRUCTIONS

Quilt Fabric

Cut 2: 29½" x 20½" (75cm x 52cm)

Clear Vinyl Plastic

Cut 1: 29½" x 6" (75cm x 15cm)

Fusible Fleece

Cut 1: 29½" x 20½" (75cm x 52cm)

Fusible Tear-away Stabilizer

Cut 1: 29½" x 20½" (75cm x 52cm)

Bias Binding

25mm x 4m

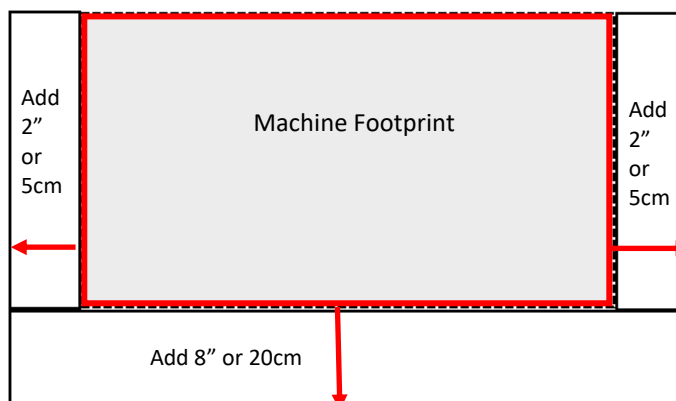


How to measure your machine to create a Mat.

Measure the base of your sewing machine.

Add an extra 2 inches to the left and right sides.

Add an extra 8 inches to the front to create the pockets.



INSTRUCTIONS

Step 1

Wind bobbin with sewing thread.
Thread the machine with the decorative thread.
Attach the Satin Stitch Foot **F**
Select Decorative Stitch #44

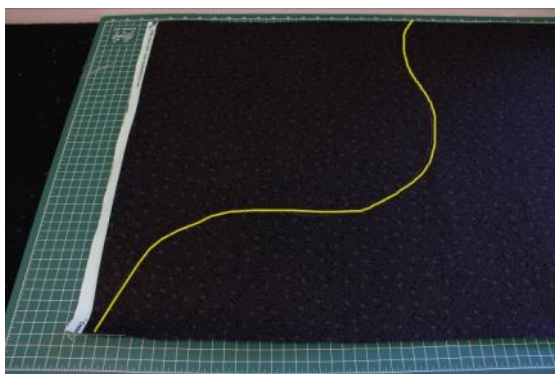


Step 2

Take one of the main fabric pieces and the fusible tear-away stabilizer; using the iron, press the stabilizer onto the wrong side of the fabric.

Step 3

On the right side of the fabric, use the erasable chalk marker and draw a curvy reference line. This is the reference line for your first row, of your decorative stitching.



Step 4

Place on the drawn line, the red arrow located on the front of the Satin Stitch Foot, then stitch following the drawn line with the red arrow on the foot, to create the first stitched line.



Step 5

Change the foot to the Border Guide Foot.
Align, the first row of the pattern between the left guidelines and stitch out the second line of decorative stitching. We used Decorative Stitch #72.

Tip: When stitching decorative stitches, sew slower to achieve the best stitch result. Stitching at speed may cause stitching issues. See page 4 for images of stitches used.



Step 6

Continue working through the same process until you have covered the surface of the fabric, using the previous stitch as the guide. See above image.

Tip: As you stitch, keep your eyes on the previously sewn stitch which is lined up with the border guide foot markings. If your eyes follow the needle, your stitching can easily move out of alignment.

If you find that you need to turn the fabric and move in the opposite direction, align the previous row of the stitching between the right guideline, then stitch out the next line of decorative stitching.

See below image.



Step 7

Remove the stabilizer from the back of the fabric.

Iron the fusible fleece to the wrong side of the decorative stitched fabric, then place on the wrong side of your second main fabric piece.

Now, pin together using the quilting safety pins.

The red circles below, show where we pinned.



Step 8

Change top thread to the sewing thread.

Attach the AcuFeed Flex Foot.

Engage the AcuFeed System.



Select stitch—Utility #3

Adjust stitch length to 4.0mm



Baste the layers together, by stitching around the outer edge.



Step 9

Using the same stitch, change the length to 3.0mm

Quilt down between the decorative stitched rows.

When finished, trim all sides to be straight, removing any excess fabric.

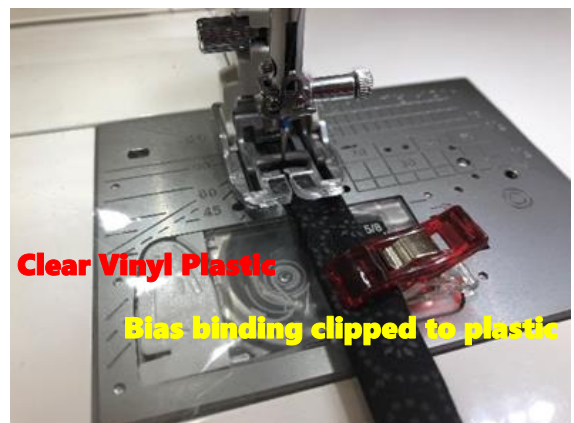
Now, set aside.



Step 10

Take the piece of clear vinyl plastic and attach the bias binding to one long side of the plastic using the quilting clips.

Tip: If pin the binding onto the plastic, make sure you pin through the binding and plastic section; you do not want to see pin holes in the plastic, once you finish.



Step 11

Divide the vinyl into 5 sections and mark.

This will create the pockets.



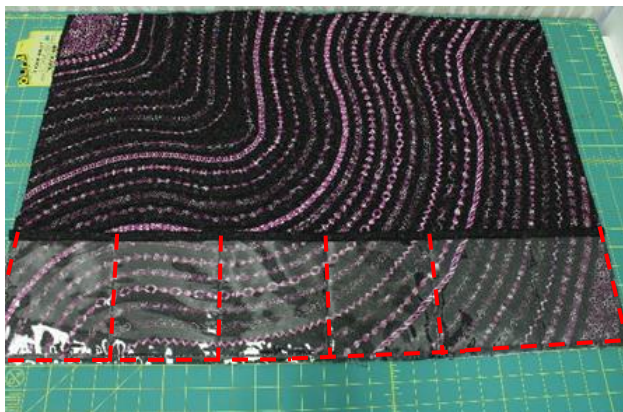
Step 12

Using Quilt clips attach the clear vinyl plastic to the bottom of the quilted fabric. *See below image.*

Use same stitch - Utility stitch #3, length 3.0mm

Stitch around the 3 outer edges to attach the clear vinyl pocket.

Stitch down, the marked sections to create the 5 pockets.



Step 13

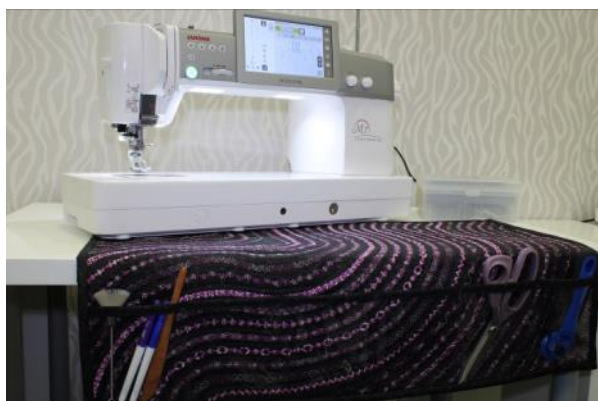
Next, attach the bias binding around the outer edge to completed the project.

Tip: You may like to use Janome's Taping Guide Foot to attach the bias binding.



9mm models
Part Number: 202310008

7mm models
Part Number: 202311009



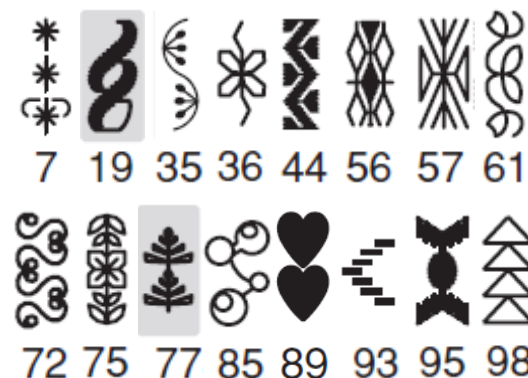
FINISH.

Decorative Stitches used in our project using the Continental Memory 7 Professional

Long (L) Stitches



Decorative (D) Stitches



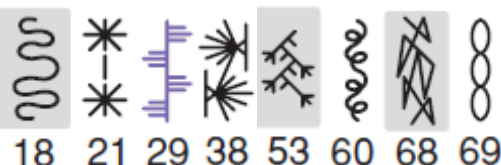
Heirloom (H) Stitches



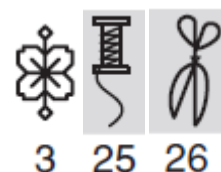
Satin (S) Stitches



Quilt (Q) Stitches



Pictograph (P) Stitches



NOTE: Purple Stitches can be tapered.

Shaded grey stitches - can flip horizontal & vertical