

Custom iPad Case Adjustable Zipper Foot

WHAT YOU WILL NEED

Janome Sewing Machine (we used the Skyline S3)
Adjustable Zipper Foot
Zig Zag Foot **A**
Janome Purple Tip Needle
Janome Plastic Bobbin
Scissors/Thread Snips
Tape Measure
Marking Pencil
Dressmaking Pins or Wonderclips
Cutting Mat & Ruler
Rotary Cutter
Ironing Board & Steam Iron

FABRIC & NOTIONS

Main Fabric - Printed 35cm (14") by wof
Lining Fabric - Plain 35cm (14") by wof
Pocket Lining Fabric - 20cm (8") by wof
Lightweight Iron-on interfacing - 20cm (8")
Bag Foam - 50cm (20")
Sewing Thread *colour to match your fabric*
1 x 35cm Zip *your colour choice to match fabric*
1 x 20cm Zip *matching for front pocket*

CUTTING INSTRUCTIONS

Main Fabric, Lining Fabric & Bag Foam

Cut 2 pieces of each width 12½" x length 9½"
(32cm x 24½cm)

Pocket lining fabric (same as lining fabric)

Cut 2 10½" x 7" (27cm x 18cm)

Iron-on interfacing

Cut 2 10½" x 7" (27cm x 18cm)



INSTRUCTIONS

Step 1

Take one each of the Main Fabric and Bag Foam.

Place Main Fabric right side up, on top of bag foam.



Step 2

Place 35cm zip at the top of the main fabric & foam.

Then, place the lining on top of the zip, make sure the zip is positioned right side down on top of main fabric. Pin all layers. *See below image.*



With your machine threaded and Zipper Foot attached.

Select straight stitch with lock-off at each end.

Stitch length: 1.8

Stitch Width: move needle to be on the left side of the zipper foot using the width key.

Line-up the right-side of the foot with the edge of the zip, then stitch across the width of the fabric.



Step 3

Inserting pocket zip using Welted Pocket method.

Take one of the pocket lining fabric pieces, then place a piece of the lightweight interfacing on the wrong side of the pocket lining. With the iron, lightly press the interfacing to the fabric.

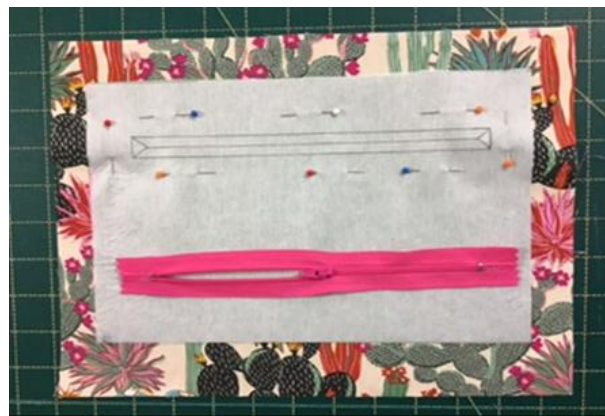
TIP: Do not move the iron around, just lightly press and lift then lightly press another section.

Next, draw a rectangle on the interfacing side of your pocket lining, ½" wide x 8 ¼" length (1.3cm x 20cm). Mark small angles at each end, as shown in the below image. Draw it approx. 1½" (4cm) below the top of the pocket.



Step 4

Place the pocket piece onto the second MAIN fabric piece with right sides together. Position the pocket piece 1½" (4cm) below the top of the main fabric, so the pocket fits nicely within the bag front area. *See below image.*



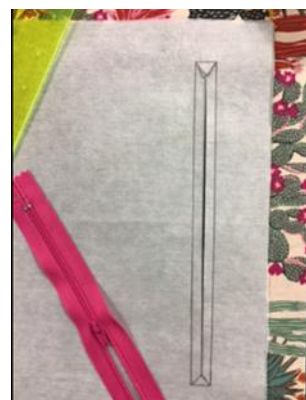
Step 5

Stitch around the **outside line** of the rectangle box, using a stitch length of 1.8mm and the adjustable zipper foot. Take your time, make sure the corners are stitched square and neatly. *See below image A.*

Image A



Image B



Now, take your sharp scissors or rotary cutter and cut through the straight line between where you have just sewn, the cut lines are shown in Image B above. Make sure you also cut those small angled lines, be careful not to snip any of the stitches.

Step 6

Turn the pocket through to the wrong side of the main fabric and press. We are ready to sew in the zip.

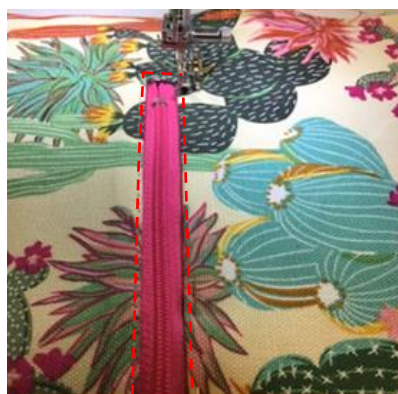


Step 7

Turn your fabric over, so you are looking at the main fabric. Lay your 20cm zip underneath it, so it fills the gap you just made.



Pin in place, making sure it is evenly placed. Now, stitch carefully around the edges of the zip, stitching on top of the main fabric. Then press.



Step 8

Now place the other piece of the pocket lining on top of the piece sewn with the zip. *See below image.*



Pin around the outside of the pocket lining only, then stitch all the way around. *Be careful not to catch the main fabric with your pins. The pocket sits freely inside the case, it is only attached via the zip.*



Step 9

Follow Step 2, attach the second side of the 30cm zip.



Step 10

Now, the zip is sewn to both sides of the main fabric. Flatten out the case and top stitch alongside the zip. Stitch length: 3, use the adjustable zipper foot. Then press, make sure all sections are well pressed.

TIP: For the best result stitch slowly, stopping and adjusting as required. See below image.



Step 11

Lay out right sides together, with main on main fabric and lining on lining fabric and open the zip to halfway. Pin all the way around, leaving a 3" (8cm) gap on one side of the lining, so it can be turned through.

You will see the zip hanging off each end, we used a nylon dress zip, which you can slowly stitch through when seaming. Attach the Zig Zag Foot and stitch around the outer edge, leaving the 3" (8cm) opening in the lining. Trim off the excess zip.



Step 12

Trim back the corners of the case, to reduce bulk.
Now, turn the case out, through the gap in the lining.
Open the zip all the way, then place the lining into the inside of the case. Give the case a good steam press.

To close the opening in the lining, fold-in the raw edges and sew a straight stitch along the edge to close the opening. Use a lock stitch at each end to secure the stitches.



FINISH.

ALTERNATIVE

Using a striped fabric and contrasting coloured zips gives a different look.

You could also use vinyl or cork fabric.

